



# Kinsmen

LUTHERAN CHURCH

*Rooted in Faith. Relevant to Life.*

December 2022

## CONNECTION

12100 Champion Forest Drive  
Houston, TX 77066  
281.444.3126

[www.KinsmenLutheran.org](http://www.KinsmenLutheran.org)

# EMMANUEL

*God With Us*

## ADVENT

Wednesday Midweek Worships at 7PM

December 7 - Holden Evening Prayer

December 14 - Las Posadas

December 21 - The Longest Night

## CHRISTMAS EVE

4PM Contemporary Worship

6PM Spanish Worship

8PM Traditional Worship

10PM Traditional Worship

## CHRISTMAS DAY

Sunday, December 25th  
10:30AM Worship

### Inside This Issue

Christmas Eve  
page 6

Children's Ministry—  
pages 10-11

Latino Ministry—  
pages 12-13

Birthdays—  
page 18

# Pastor's Word

Kinsmen Connection, page 2

December 2022

Dear Brothers and Sisters in Christ,

Can you remember back to a time in childhood when someone chose you to be on their team during recess? Or maybe someone asked you to dance with them or to go on a date. Maybe someone went out of their way to talk to you and initiate a friendship with you and it made all the difference in the world. It left you feeling so loved and cared for. The thrill and joy of being chosen might have given you the strength and confidence you needed to be who you were created to be.

On the other hand, maybe there have been times when you felt excluded, dismissed, left out, or judged. Maybe this left you feeling isolated, like you had to adapt to fit in, and hide who you really were. This might have left you wary and distrustful of yourself and others. This may have made it difficult for you to be who God created you to be.



We've all probably had both of these experiences somewhere along the spectrum from being chosen to being rejected. But at this time of year, we're reminded that God always chooses us. Even in our worst moments--in our very real, shame-filled, mean, embarrassing, ugly moments--God always chooses You.

For those of us who grew up going to church on a regular basis, the words *Emmanuel* and *Incarnation* might sound normal and commonplace. They're words we've heard most of our lives, especially at this time of year, so it can be easy to lose sight of the powerful meaning behind them.

**Emmanuel** means God with us.

*'Look, the virgin shall conceive and bear a son, and they shall name him Emmanuel', which means, 'God is with us.'*—  
Matthew 1: 23

*"Christ Jesus, who, though he existed in the form of God, did not regard equality with God as something to be grasped, but emptied himself, taking the form of a slave, assuming human likeness."* - Philippians 2:6-7

**Incarnation** means that God came in the flesh to be with us.

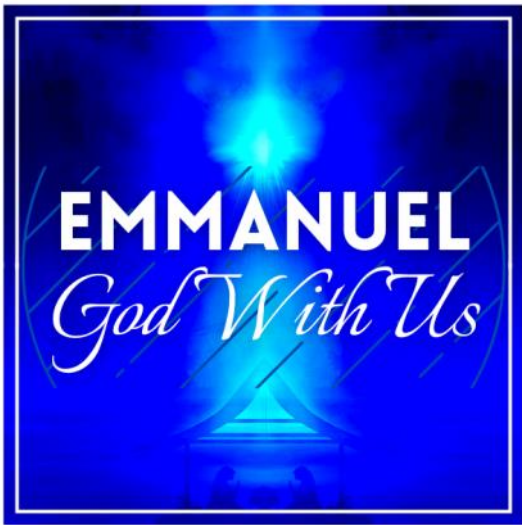
*And the Word became flesh and dwelt among us, full of grace and truth* - John 1:14

Both words communicate that God chooses to be with us. God chooses us and loves us. God will do whatever it takes to be in a relationship with us. We are never rejected by God and God delights in the beloved children that we were created to be. This is the radical good news of Christmas. This is the powerful good news for you to take with you into 2023...and every day of every year!

Have a Holy Advent, a Merry Christmas, and a Happy NEW Year!

A handwritten signature in cursive script that reads "Beth Warpmaeker".

Beth Warpmaeker, Senior Pastor,  
Kinsmen Lutheran Church



**Emmanuel** means God with us. **Incarnation** means that God came in the flesh to be with us. Both words communicate that God chooses to be with us. God chooses us and loves us. God will do whatever it takes to be in a relationship with us. We are never rejected by God and God delights in the beloved children that we were created to be.

This is the radical good news of Christmas. Join us for Advent weekend and midweek worship services to be inspired by these words of hope, peace, joy and love!

**November 26-27**

God With Us: Hope  
Isaiah 2:1-5  
Matthew 24:36-44

**December 3-4**

God With Us: Peace  
Isaiah 11:1-10  
Matthew 3:1-12

**December 10-11**

God With Us: Joy  
Isaiah 35:1-10  
Matthew 11:2-11

**December 17-18**

God With Us: Love  
Isaiah 7:10-16  
Matthew 1:18-25



**WEDNESDAY MIDWEEK WORSHIPS**

*7PM in sanctuary*

**November 30 - Holden Evening Prayer**

**December 7 - Holden Evening Prayer**

**December 14 - Las Posadas**

**December 21 - The Longest Night**





## The Longest Night Worship Service

Christmas can be a painful time for some. It may be the first Christmas without a loved family member who has recently died; it may be a time that has always been difficult.

The constant refrain on the radio and television, in shopping malls and churches, about the happiness of the season, about getting together with family and friends, reminds many people of what they have lost or have never had. The anguish of broken relationships, the insecurity of unemployment, the weariness of ill health, the pain of isolation - all these can make us feel very alone amidst the celebrating and spending. We need the space and time to acknowledge our sadness and concern; we need to know that we are not alone.

For these reasons, Kinsmen's Community of Hope Lay Chaplains will offer a special "Longest Night" service on December 21 at 7 PM. The service will include Holy Communion, prayers, scripture and music that acknowledges that God's presence is for those who mourn, those who struggle and that God's Word comes to shine light into our darkness.

Everyone, regardless of church background is welcome.

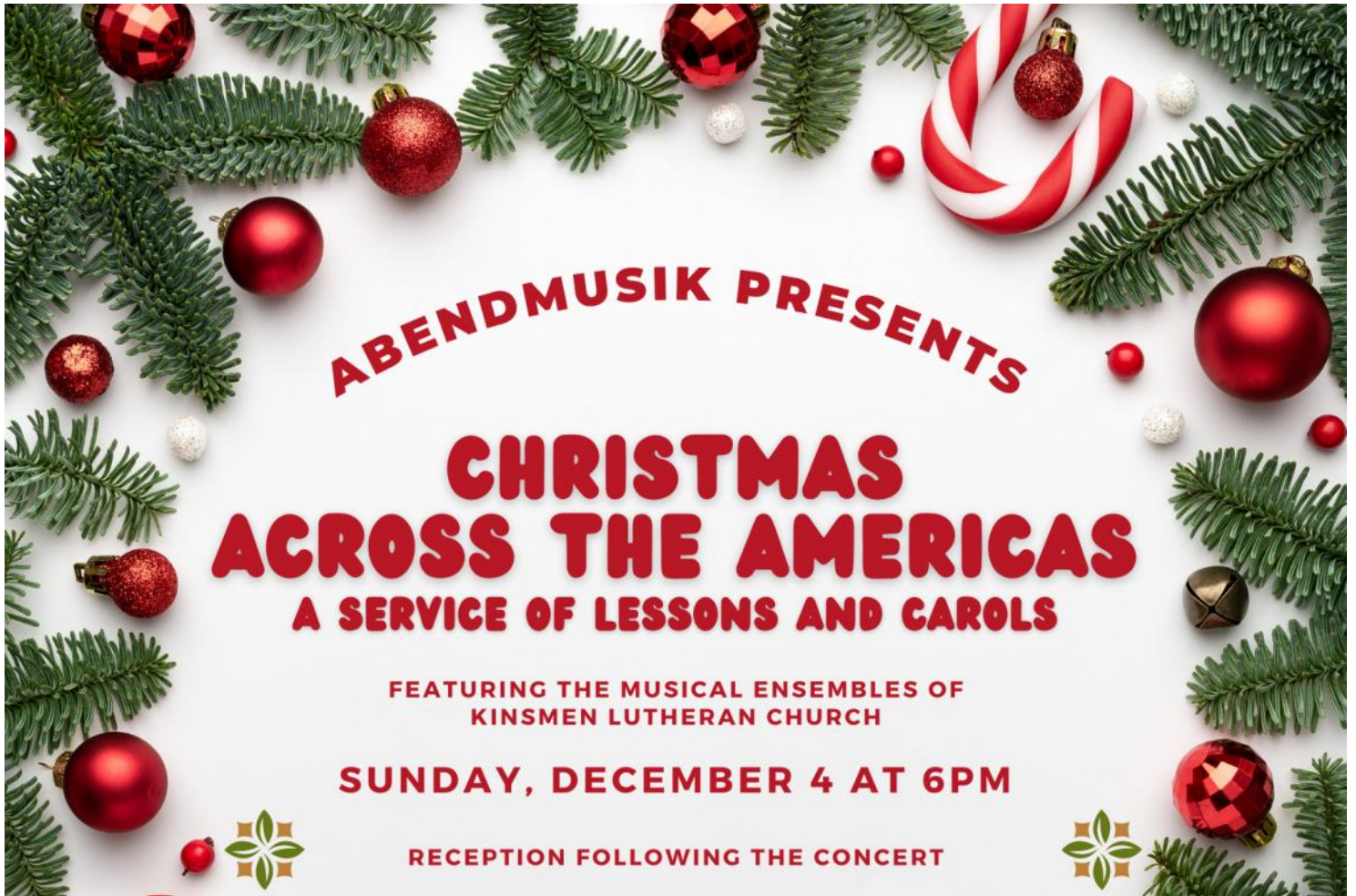


## Adorn the Sanctuary with Poinsettias

Help us adorn the Sanctuary during the Advent/Christmas season by purchasing a poinsettia in honor or memory of a loved one or given to the Glory of God. The cost is \$12 for each plant. Poinsettias may be taken home after the 10 PM worship service on Christmas Eve or may be designated to be given to a shut-in. You may order your poinsettia through this link: <https://bit.ly/22Poinsettias>

The last day to order poinsettias is December 15.





**ABENDMUSIK PRESENTS**

**CHRISTMAS  
ACROSS THE AMERICAS**

**A SERVICE OF LESSONS AND CAROLS**

FEATURING THE MUSICAL ENSEMBLES OF  
KINSMEN LUTHERAN CHURCH

**SUNDAY, DECEMBER 4 AT 6PM**

RECEPTION FOLLOWING THE CONCERT

**SPECIAL HOLIDAY  
WORSHIP SCHEDULE**

**Sunday, December 25**

10:30AM English (no Spanish)

**Saturday, December 31 (New Year's Eve)**

5:30PM English  
7:00PM Spanish

**Sunday, January 1**

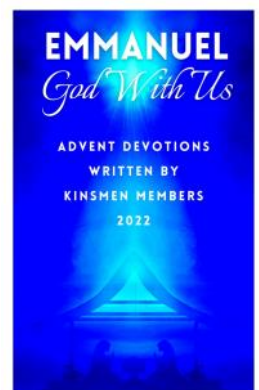
10:30AM English (no Spanish)

**ADVENT DEVOTIONALS**

Our 2022 Advent Devotionals are available in the narthex. There is a devotion for each day in the Advent season and are all written by Kinsmen members.

You can also download or view the devotionals at:

[Kinsmenlutheran.org/worship-information-for-today](https://Kinsmenlutheran.org/worship-information-for-today)





# Christmas Eve

**4PM**

**6PM**

Contemporary Misa en espanol

**8PM**

**10PM**

Traditional  
with brass

Traditional  
with brass

All worship services have communion and candlelight.



WISH YOU A MERRY  
**CHRISTMAS**  
& HAPPY NEW YEAR

*F. Mark England*

*Chris Ray*  
*Janice*

*Juliana*

*Beth Warpmacker*

*Cokette Edwards*

*Chris Ray*

*Synnae Schatz*

*Juliana*



December, 18 at 3PM  
FOR EVERYONE!  
Christmas  
CAROLING

Caroling, Caroling through the town...Join in the Christmas fun as we carol on Sunday, December 18 from 3- 5 PM.  
If you can come, please sign up here: <https://bit.ly/carolingwithkinsmen2022>  
*Note: Your signing up helps with the planning.*

## Educational Opportunities

### Incarnation: Rediscovering the Significance of Christmas

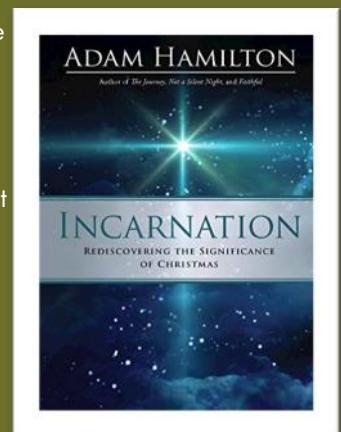
by Adam Hamilton

Sundays at 9:45AM  
beginning December 4

What's in a name? The prophets, the shepherds, the wise men, and the angels called him Lord, Messiah, Savior, Emmanuel, Light of the World, and Word Made Flesh. His parents gave him the name Jesus. How do these names help us understand who Jesus is and be drawn into a deeper relationship with Him?

Join us this Advent Season as we examine the names of Christ used by the gospel writers and explore the historical and personal significance of his birth. While there is so much that demands our attention during the holiday season, this study will help us refocus on the Christ child who brings us together, heals our hearts, and calls us to bring light into the darkness.

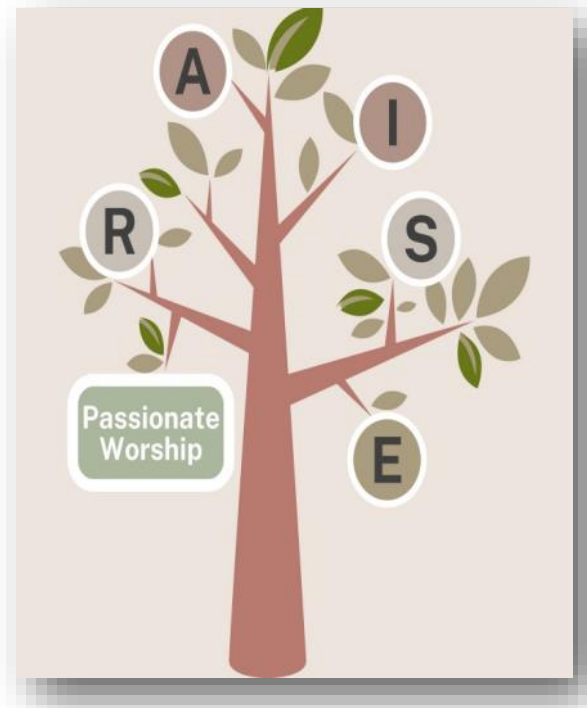
You can register for the Sunday, 9:45 AM Pastor-led class here: <https://bit.ly/IncarnationClass>.



## Ways to Grow in your Faith as a P.R.A.I.S.E Disciple

**P**assionate Worship, **R**adical Hospitality, **A**dventurous Service, **I**ntentional Faith Formation, **S**ensitive Evangelism, **E**xtraordinary Generosity

Because we want to connect you to concrete ways to grow in your faith, we have developed a Discipleship Path at Kinsmen. The Discipleship Path will help guide us as we grow in our faith through **worship**, hospitality, faith formation, service, sharing your faith, and generosity.



Fill out this form to be connected to ways to grow in your faith this season through **Passionate Worship**.

<https://bit.ly/KinDPWorship>

## Are you interested in a Kinsmen Trip?

The Holy Land, Peru, the Apostle Paul's journeys....

There are several options for trips in the next few years, but Pastor Beth needs to know what interests you.

- We have a mission partnership with the church in Peru. Is this a trip that interests you? There is a group traveling there in July or August of this year.
- We have a mission partnership with Christmas Lutheran Church in Bethlehem. Would you like to go on a trip and experience the 5<sup>th</sup> Gospel – The Land—by visiting key sites from the Biblical narrative and learning about their history and current relevance? A Trip may be planned in 2024 if there is enough interest.
- Our synod has regular trips that follow the Apostle Paul's missionary journeys. One is scheduled for this April. Should we plan to take a group from Kinsmen in the future?

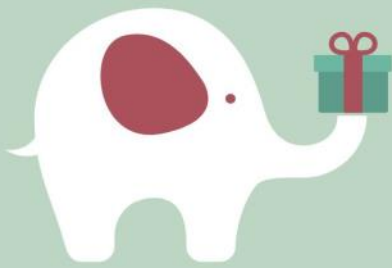


Email or call Pastor Beth at the church if you are interested in taking a trip with other members and friends of Kinsmen.



# YOUTH NEWS

## WHITE ELEPHANT GIFT EXCHANGE



**DECEMBER 11  
5PM**

All high school students are invited to our annual SWAT "White Elephant" gift exchange and Christmas party on December 11 from 5-7PM. We will gather at the Marks/LeMay home for food, fun, fellowship, and our traditional "White Elephant" gift exchange game. A "White Elephant" gift can be funny or something you have at home and would like to re-gift. Bring a wrapped gift and a snack to share. Please register here. <https://bit.ly/KinSWATDec11> If you need gift ideas or have questions, please contact Kristen at [kschulzee@kinsmenlutheran.org](mailto:kschulzee@kinsmenlutheran.org)

Summer Camp at Lutherhill  
July 16-21, 2023  
More details on page 10



## Retreats

### Youth and Family News

Are you receiving the Tuesday Middle School and High School Youth Ministry News?

These emails are one of the primary ways you will stay in the know on all things, especially Confirmation (Middle School) and SWAT (High School) happenings.

If you are not receiving the Tuesday email, please contact [Pastor Mark](mailto:Pastor Mark) at [mengland@kinsmenlutheran.org](mailto:mengland@kinsmenlutheran.org)

### Save the Date

### Worship, Lead, Serve @ Lutherhill February 17-19

A gathering for 6th-12th grade youth to practice daily discipleship.

Gather together with Jr. High and Sr. High youth from Texas, Louisiana and beyond for a weekend at the Hill in La Grange. We'll explore practical discipleship in daily life. What does it look like to follow Jesus at work and home? We'll practice discipleship as we eat community meals, explore our faith and engage in meaningful conversations. And don't worry! We'll have plenty of time for all your favorite camp activities and some random improvised ones, too.

# C h i l d r e n ' s M



## Summer Camp at Lutherhill

July 16-21, 2023

Kinsmen takes our kids to Lutherhill for a half, or full week each summer.

Our 1st graders go to camp for Sunday-Wednesday. Our 2nd - 5th graders and middle school students go from Sunday-Friday.

Wondering what campers will gain from a week at Lutherhill?

We're glad you asked! Here are just a few benefits of camp:

**FAITH!** We encourage campers to engage their faith with a sense of wonder rather than certainty. This wonder ignites a passion for lifelong faith exploration.

**AFFIRMATION!** Our young adult staff are specially trained to engage campers in all camp activities while honoring their individual needs.

**COMMUNITY!** Campers live together in cabins and are partnered with another cabin group to create a 'village'. It's a great way to practice living well with others.

**ADVENTURE!** Campers are encouraged to try new things and most of all have fun! Middle school students are attending the same week!

Ready to register?! Put Kinsmen as your church to be housed together. Register at [lutherhill.org](http://lutherhill.org)



## Communion Milestone Retreat

January 27-29, 2023

**Who:** 4th & 5th graders and at least one caring adult, but the whole family is welcome!

**When:** Friday, January 27 to Sunday, January 29 (Leave Houston around 5 PM Friday, return to Houston around 11 AM Sunday)

**Where:** [Lutherhill](#) in La Grange, TX

**Why:** For adults and kids to take time away to be together and learn about this important sacrament of Holy Communion

Contact Sara Ray ([sray@kinsmenlutheran.org](mailto:sray@kinsmenlutheran.org)) for more information and to register!



# ministry News



## Children's Christmas Program

Sunday, December 11 at 4PM

Has your child always wanted to be Mary, Joseph, an angel, a star, a shepherd, or a sheep? Join us as we reenact the first Christmas!

Contact Sara Ray ([sray@kinsmenlutheran.org](mailto:sray@kinsmenlutheran.org)) to showcase your child's acting skills (or just plain silliness!)



## New Year's at Noon(ish)

Saturday, December 31 at 10:30AM

Join us from 10:30 AM to 12:30 PM on December 31 as we ring in the new year without being exhausted! All ages are welcome.

Please RSVP to [sray@kinsmenlutheran.org](mailto:sray@kinsmenlutheran.org) so we can plan for food and games!

## Kinsmen Children's Academy Before & After School Program

We will be open for Holiday Care from 9 AM to 4 PM, December 19-22 and 26-30. Please contact Dennisse Mejia-Cruz ([dmejia-cruz@kinsmenlutheran.org](mailto:dmejia-cruz@kinsmenlutheran.org)) before December 14 if you are interested in care for school-aged kids during Christmas break. The cost is \$125/week from 9 AM to 4 PM. Before and after care are available.

Register today at: <https://bit.ly/KCADec22>



# MINISTERIO LATINO



## MY ADVENT INTENTIONS

**WHAT IT CONSISTS OF:** This interactive advent wreath prepares us for the birth of Jesus. The wreath consists of 4 cylinders (found in the narthex) that represent the 4 weeks of Advent.

**HOW IT WORKS:** The cylinders will be filled every Sunday with the ornaments where you write your Advent intentions with the markers: for your family, a friend in need, a sick person, or any other need. In addition, this wreath will become a symbol of the unity of our Church.

**FIRST SUNDAY : HOPE**

**SECOND SUNDAY: PEACE**

**THIRD SUNDAY: JOY**

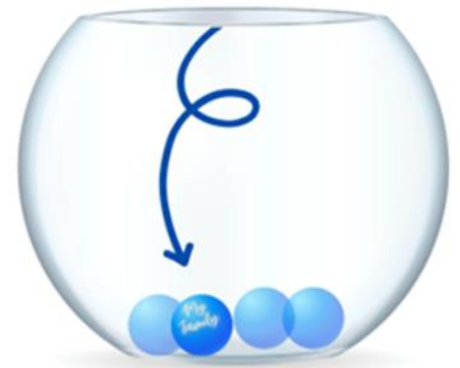
**FOURTH SUNDAY: LOVE**



### WHO CAN PARTICIPATE?

Everyone is welcome!

During this season of Advent, we want to strengthen the unity of our community, as a single entity making our intentions a gift to our spirit full of hope, peace, joy, and love.





## **Transition in Spanish-speaking Ministry**

### **A letter from Pastor Gabriel**

Dear brothers and sisters in Christ, As ministers of God, we have accepted and embraced the cross of Christ. Some of us have left our families and loved ones to fulfill the task of being evangelizers. During these 3 years of my call here, I was assigned the task of planting the seed of faith in this community.

As you may know, it has not been easy. (Who said it would be?) However, the reward in the Lord will be wonderful. Therefore, I must continue God's mission elsewhere and plant many other seeds in other hearts. I am confident that God will send you another good shepherd. I only ask you to pray for me through this process and stand firm in the faith, remembering that the church is all of us. My last worship celebration as your spiritual guide and companion will be on January 22, 2023.

Finally, if I have offended anyone on any occasion, I ask you to forgive me. I am human and I make mistakes and I am willing to make amends. Thank you for being my family these past three 3 years. "God does not force our will; he takes what we give him; but he does not give himself completely until we give ourselves completely." --St. Teresa of Avila.

Sincerely,  
Pastor Gabriel

-

A Response from Pastor Beth:

Dear Kinsmen/ Sagrada Familia,

It is with great sadness that the church leadership and I received the news about Pastor Gabriel's desire to leave this congregation. We were ready to celebrate his ministry, extend an open-ended call to him, and plan for the future. However, before we could renew his call, he decided that it was time for him to leave. Instead, we will give thanks to God for bringing Pastor Gabriel here for the past 3 years. We will also celebrate and express our gratitude for the wonderful ministry he has helped to develop during this short period of time. It was not an easy time to be a mission start pastor during the pandemic, and yet, Pastor Gabriel has grown the Spanish-speaking ministry at Kinsmen in so many ways. For this, we are so grateful.

Please know that the church leadership and I are committed to continuing the Spanish speaking ministry. We have already been working to find someone who can continue the ministry in the short term and the long term. Please let me know if you have any questions moving forward or if you have any comments and feedback for the continuation of this ministry.

Grace and Peace,  
Beth Warpmaeker,  
Senior Pastor Kinsmen Lutheran Church



## Upcoming events:



**Monday, December 5<sup>th</sup> Noon – Lunch**  
Sam's Seafood & Steak at 12758 Grant Road  
with a white elephant exchange.

**Monday, January 9<sup>th</sup> Noon**  
Mo's Irish Pub at 138 Vintage Park Blvd.

For more information contact Colette at  
[cedwards@kinsmenlutheran.org](mailto:cedwards@kinsmenlutheran.org)



# Holiday Market

DECEMBER 2, 2-7PM  
DECEMBER 3, 5-7PM  
DECEMBER 4, 9AM-2:30PM; 4-6:30PM  
IN THE COFFEE HOUSE





## Noisy Offering—Bright Stars of Bethlehem

Bright Stars of Bethlehem, our December mission partner, has been supporting the futures of the people of Bethlehem through programming from childhood through geriatrics. The work started with the outreach from Christmas Lutheran Church and its then pastor, Rev. Dr. Mitri Raheb, and has led to Dar Al-Kalima, a fully accredited university with 5 colleges offering 22 degrees.

Supporting education is so important in this region where resources are scarce. Both scholarships and educational resources are essential. Currently, the new big news is that Bright Stars is working directly toward a new concept for Dar Al-Kalima, the Hospitality Educational Center.

This Center has two parts, an educational kitchen and a restaurant. The educational kitchen will have 8 work stations, so multiple students can cook at the same time. In the restaurant, people can come to enjoy the Palestinian cuisine from a modern, open addition atop an existing building. This glass structure, poised at the top of the highest land in the area, affords guests views of Bethlehem and so much more, even going to the Dead Sea. Hospitality and tourism are essential to this region, so the center will address both of those.

Kinsmen has a loving history with Bright Stars of Bethlehem, Rev. Mitri Raheb, and the people of Bethlehem. It is a wonderful connection to people who need support and the history of Christmas. Please visit the website to learn so much more about Bright Stars of Bethlehem and to dive into the Dar Al-Kalima story.

<https://www.brightstarsbethlehem.com/>



## Food Distribution

Saturdays, December 3 & 17

Kinsmen Lutheran Church, in partnership with Bridging for Tomorrow and the Houston Food Bank, serves as a Mobile Food Distribution Site every month. The distribution dates this month are December 3 from 8-11AM and December 17 from 10 AM—1PM. The food is for everyone.

Volunteers are needed to make the Distribution possible. There are a variety of volunteer opportunities available. Visit [kinsmenlutheran.org](http://kinsmenlutheran.org) - EVENTS - to sign up to volunteer.

Contact [Lynnae Schatz](mailto:Lynnae.Schatz@kinsmenlutheran.org) if you have questions.



## A NOTE FROM KINSMEN'S CHURCH COUNCIL PRESIDENT

This upcoming Christmas season is a time to celebrate God continually bestowing his many gifts upon the world. In this season of thanksgiving, we traditionally give gifts to recognize the blessings that God has bestowed upon us. The pastors and staff of Kinsmen have been a blessing to us all throughout a year that has been filled with joys and many challenges. They have repeatedly risen to the occasion and exemplify what it means to be disciples of Christ.

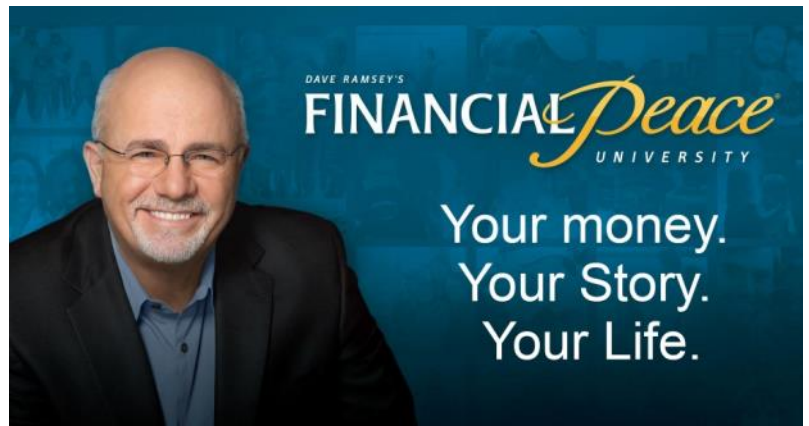
We continue the tradition of making a monetary gift to our pastors and staff who have faithfully and diligently served our church throughout the year. Please join us in marking your donation as "Pastors and Staff" and place it in the offering plate, or mail it to the church. On behalf of our Kinsmen Council, have a wonderful season of celebration with family, friends and Kinsmen Lutheran!!!!

Peace in Christ,

Eric Fidler  
2022 Church Council President

## Financial Peace University

FPU is a money-management course taught by one of America's most trusted financial advisors, Dave Ramsey. During the nine weekly video classes, Dave and his teaching team will walk you through the basics of budgeting, dumping debt, charitable giving, planning for the future, and much more. Kinsmen's Generosity Team facilitates FPU as attendees learn these steps toward financial peace.



Some of the feedback we have received from students over the years include:

Before this class, I never felt "in control" of my finances. Now, I have a plan and confidence that I will make good decisions.

FPU has given me the tools I need to plan a budget and build wealth on an hourly salary. I am much more at ease about my finances.

We are now credit card debt free and committed to stay that way. We have most benefitted from learning God's principles of money. Thank you for offering this class. You are making a difference in the community and your congregation.

We will be hosting the course IN PERSON beginning Tuesday, Jan. 24 from 7:00-8:30PM. (The last class will be March 28.)

The cost is \$100 per person or couple for the 9-week course with a \$20 rebate at the end. (This is a discounted price from what you find on FPU's website.) Additional partial scholarships may be available upon request from Pastor Beth. This class is best done with a group of others who are committed to the class. For this reason, in order to receive the discount and/ or scholarship, you must attend 7 out of the 9 classes.)

Please register here: <https://bit.ly/FPU2023>

## 2023 Giving Intent Cards

Thank you for your faithfulness and generosity in the past year! Please prayerfully consider how you will share your time, talent and treasures in 2023 and turn in your 2023 Giving Intent card if you have not done so already. You may turn it in digitally by going to this link: <https://bit.ly/Annual2023Intent>.

Good News! We have already surpassed the goal of receiving 135 Intent cards which means a challenge gift of \$25,000 will be given to Kinsmen in the new year!



# THANK YOU!

THANK YOU to the following community businesses that contributed to the 2022 Community Thanksgiving Feast and/or Run for your Turkey:

Fleet Feet  
Gringo's  
Klein Funeral Home  
Thrivent Action Grants  
Vito's Famous  
Woodlands Realty – cindy Watson  
Quick Quack Care Wash  
Methodist Hospital OB/GYN - Dr. Stacy Norton  
Lone Pint Brewery  
New Season Catering  
Be an Angel

THANK YOU to the volunteers who made the Thanksgiving Feast possible.  
Together we served 846 meals.

---

**Give the gift of life this holiday season.**

**Schedule your appointment  
today at:**

**<https://bit.ly/dec18blooddrive>**

**December 18  
8AM -12:30PM**







## Christmas Shopping Can Benefit Kinsmen

If you are shopping online for Christmas, go to [smile.amazon.com](https://smile.amazon.com) from the web browser on your computer or mobile device. On your first visit to AmazonSmile you need to select Kinsmen Lutheran Church to receive donations from eligible purchases before you begin shopping. Amazon will remember your selection, and then every eligible purchase you make at [smile.amazon.com](https://smile.amazon.com) will result in a donation to Kinsmen. Easy! And it will all help the church!

## December Birthdays

Woody Lyons	12/01	Lisa Pruitt	12/08	Barbara Lellis	12/16	Stephanie Schroeder	12/26
Jackson Hahn	12/01	Lisbeth Gillette	12/09	Diana Daniels	12/16	Tammy Hamric	12/26
Ellyse Hahn	12/01	Richard Vermilyea	12/09	Henry Orosco	12/16	Rhett Kobmann	12/26
Sandra Gutierrez	12/02	William Landolt	12/09	Daniel Shelor	12/16	Robert Durrett	12/27
Billy Pickett	12/02	Harley Ford	12/10	Kelly Ford	12/19	Kent Richter	12/27
Summer Rodenhauser	12/02	Wendi Zabadal	12/10	Gerald Awbrey	12/19	Michael Schwartz	12/27
Jennifer Mills	12/03	Lukas Smith	12/10	Larry Hake	12/20	Evelyn Anz	12/27
Mary Jyrkama	12/03	Thomas Shurbet	12/11	Laura Sell	12/20	Nathaniel Schatz	12/28
Lee Smith	12/03	Payton Doyle	12/11	Cynthia Crocker	12/21	James Blackburn	12/29
Monica Garcia	12/03	Gregory McCue	12/12	Sandra Awbrey	12/21	Kylie Johnson	12/29
James Gradoni	12/03	Rick Rueda	12/12	Sabrina Tabibian	12/21	Diane Dzygun	12/30
Elizabeth Marks	12/04	Paul Wangsmo	12/12	Hannah Macon	12/22	Cheryl Cook	12/30
Thomas Rudy	12/05	Andrew Hanson	12/13	Ron Zabadal	12/22	Denise Cook	12/30
Kole Metting	12/05	Harland Maisel	12/13	Hannah Campos	12/22	Kirby Meyer	12/31
Amy Craig	12/07	Shafer Gribb	12/13	J.B. Harvey	12/23	Bob Hagan	12/31
Cheryl Helgoe	12/08	Edward Brinz	12/14	Andrew Mihalik	12/23	Conner Morgan	12/31
Maryanne Keeling	12/08	Carol Bayer	12/15	Susan Hall	12/24	Gina Gradoni	12/31
Gloria Lush	12/08	Evan Kulhanek	12/15	Kristopher Cook	12/24		
Lisa Pruitt	12/08	Charles Clark	12/15	Kathryn Malone	12/25		



# GLIMPSES of GRACE

## KINSMEN BUDGET UPDATE - CHURCH ONLY OPERATING HIGHLIGHTS FOR October 2022

	Budget	Actual	Variance
Total Income	112,704	114,856	2,152
Total Expenses	121,409	153,881	32,471
Net	(8,705)	(39,024)	(30,319)
<b>Year-to-Date (2022)</b>			
Total Income	1,188,006	1,232,319	44,313
Total Expenses	1,187,022	1,179,559	(7,463)
Net	984	52,760	51,776

## GIVING UPDATE

Thankoffering	Budget	Actual	Variance
October 2022	84,004	73,438	(10,566)
Year-to-Date (2022)	900,806	872,751	(28,055)
<b>Total Pledges</b>	124		
Against Pledge	118		
Rec'd in '21	1		
Non-Pledged	222		
<b>Total Households Giving</b>	341		

## Note about End-of-Year Contributions

Someone will be at the church office to receive your offering until noon on December 30 and at 5:30PM worship on Saturday, December 31. The office closes at Noon on Friday, December 30. Contributions mailed and post-marked by December 31 will still be counted toward 2022 contributions.

## GLIMPSES OF SHARING GRACE CARE MINISTRY

November 2022	
Flower Deliveries	54
Prayer Shawls	5

## GLIMPSES OF GRACE

October 2022	
Noisy Offering— Lutheran Disaster Response	\$2,572.42
General Mission Support	\$7,930.10
Designated Mission Support	\$298.50
KCA Scholarships	\$245.00
Good Samaritan Fund	\$1,893.00
October TOTAL	\$11,046.02
YTD TOTAL	\$128,967.64

# IN PERSON AND ONLINE WORSHIP SCHEDULE:

## INFORMAL WORSHIP

Saturday  
5:30 PM

## TRADITIONAL WORSHIP

Sundays  
8:30 AM

## EDUCATIONAL HOUR

Sundays  
9:45 AM

## CONTEMPORARY WORSHIP

Sundays  
11:00 AM

## MISA en ESPAÑOL

Domingos  
12:30 PM

## ESCUELA DOMINICAL

Domingos  
12:30 PM

## Kinsmen Staff

Reach a staff member directly by dialing  
281-444-3127, plus their extension

### **Rev. Dr. Beth Warpmaeker, Senior Pastor**

[bwarpmaeker@kinsmenlutheran.org](mailto:bwarpmaeker@kinsmenlutheran.org) —Ext. 118

### **Rev. Mark England, Youth, Family and Group Ministry**

[mengland@kinsmenlutheran.org](mailto:mengland@kinsmenlutheran.org) — Ext. 124

### **Rev. Gabriel Marcano, Ministerio Latino**

[gmarcano@kinsmenlutheran.org](mailto:gmarcano@kinsmenlutheran.org) — Ext. 119

### **Lynnae Schatz, Director of Congregational Life**

[lschatz@kinsmenlutheran.org](mailto:lschatz@kinsmenlutheran.org) — Ext. 143

### **Sara Ray, Director of Children's Ministry & Outreach**

[sray@kinsmenlutheran.org](mailto:sray@kinsmenlutheran.org) — Ext. 117

### **Colette Edwards, Senior Ministry Coordinator**

[cedwards@kinsmenlutheran.org](mailto:cedwards@kinsmenlutheran.org) — Ext. 111

### **Chris Ray, Director of Communications and Facilities**

[communications@kinsmenlutheran.org](mailto:communications@kinsmenlutheran.org)—Ext. 121

### **Anh Truong, Accounts Payable Clerk**

[atruong@kinsmenlutheran.org](mailto:atruong@kinsmenlutheran.org)

### **Kristen Schulze, Contemporary Worship Coordinator**

[kschulze@kinsmenlutheran.org](mailto:kschulze@kinsmenlutheran.org)

### **Alvin Johnson, Keyboardist for the Praise Team**

[ajohnson@kinsmenlutheran.org](mailto:ajohnson@kinsmenlutheran.org)

### **Elizabeth Marks, Alleluia Choir Director**

[emarks.klc@gmail.com](mailto:emarks.klc@gmail.com)

### **Adriana Cuina, Spanish Communications Administrator**

[acuina@kinsmenlutheran.org](mailto:acuina@kinsmenlutheran.org)—Ext. 114

### **Ruben Aranda, Custodian**

### **Gonzalo Montes, Custodian**

### **Rachel Santellana, KCA Preschool Director**

[rsantellana@kinsmenlutheran.org](mailto:rsantellana@kinsmenlutheran.org)—Ext. 123

### **Dennisse Mejia-Cruz, Kinsmen Children's Academy, Before and After School Director**

[dmejia-cruz@kinsmenlutheran.org](mailto:dmejia-cruz@kinsmenlutheran.org)—Ext. 135

### **Hannah Macon, Interim Children's Choir Director**

### **Linda Thomas, Interim Organist**

## CONNECTION

is a monthly publication of Kinsmen Lutheran Church. Deadline for submitting news is the **15<sup>th</sup>** day of each month or the previous church business day if the deadline falls on the weekend or on a church holiday. Articles are preferred electronically, but may be faxed or hand-delivered to a staff member.



## Office Hours

Monday—Thursday

9 AM—5 PM

Friday

9 AM—12 PM

## Contact Information

281-444-3126 Phone

281-444-1733 FAX

[kinsmen@kinsmenlutheran.org](mailto:kinsmen@kinsmenlutheran.org)

## Membership

Interested in learning more  
about Kinsmen?

Contact Pastor Beth, Pastor Mark, or  
Lynnae Schatz for more information.

